

ELED-100-DP2 DT8 Series

100W DALI 2 & Push Dimmable DT8 LED Driver



NFC Handheld devices



EasyNFC app



EasyNFC app NFC handheld device

UK
CA



SELV IP66



Features:

- DT8- warm white and cool white dimming
- Constant voltage/ PWM Output (NFC regulation)
- DALI & Push dimming function
- AC input: 200-240VAC
- Built-in active PFC function
- Efficiency up to 89%
- Protections: Short circuit/ Over load/ Over temperature
- Cooling by free air convection
- IP66 design for indoor and outdoor installation.
- Suitable for intelligent LED lighting

Models

ELED-100-12DP2 DT8

ELED-100-24DP2 DT8

ELED-100-48DP2 DT8

Output Specifications

Output Voltage	12V (12-13.5V adjust by NFC)	24V (24-26V adjust by NFC)	48V (48-50V adjust by NFC)
Voltage Tolerance	± 0.5%		
Output Current	8.34A	4.17A	2.085A
Rated Power	100W		
Load Regulation	± 2%		

Input Specifications

Input Voltage	100-277VAC		
Frequency Range	47-63Hz		
Inrush Current	59A (Twidth=210µs 230VAC)		
Full Load Efficiency (Typ.)	87%		86.4%
AC Current (Max.)	0.8A		
Leakage Current	<0.50mA		
Power Factor	PF≥0.98@120VAC PF≥0.96@230VAC PF≥0.95@277VAC (Full loading)		

Protection

Short Circuit	Constant current mode, recovers automatically after fault condition is removed		
Over Loading	≤120% constant current limiting, recovers automatically after fault condition is removed		
Over Temperature	100°C± 10°C		
Protection Class	I		

Environment

Working Temperature	-40~+60°C (Refer to derating curve)		
Working Humidity	20-95% RH, non-condensing		

ELED-100-DP2 DT8 Series

100W DALI 2 & Push Dimmable DT8 LED Driver

Safety & EMC

Storage Temperature, Humidity	-40~+80°C, 10-95% RH
Temperature Coefficient	±0.03%/°C (0-50°C)
Vibration	10-500Hz, 5G 10min./ 1 cycle, period for 60min.each along X, Y, Z axes

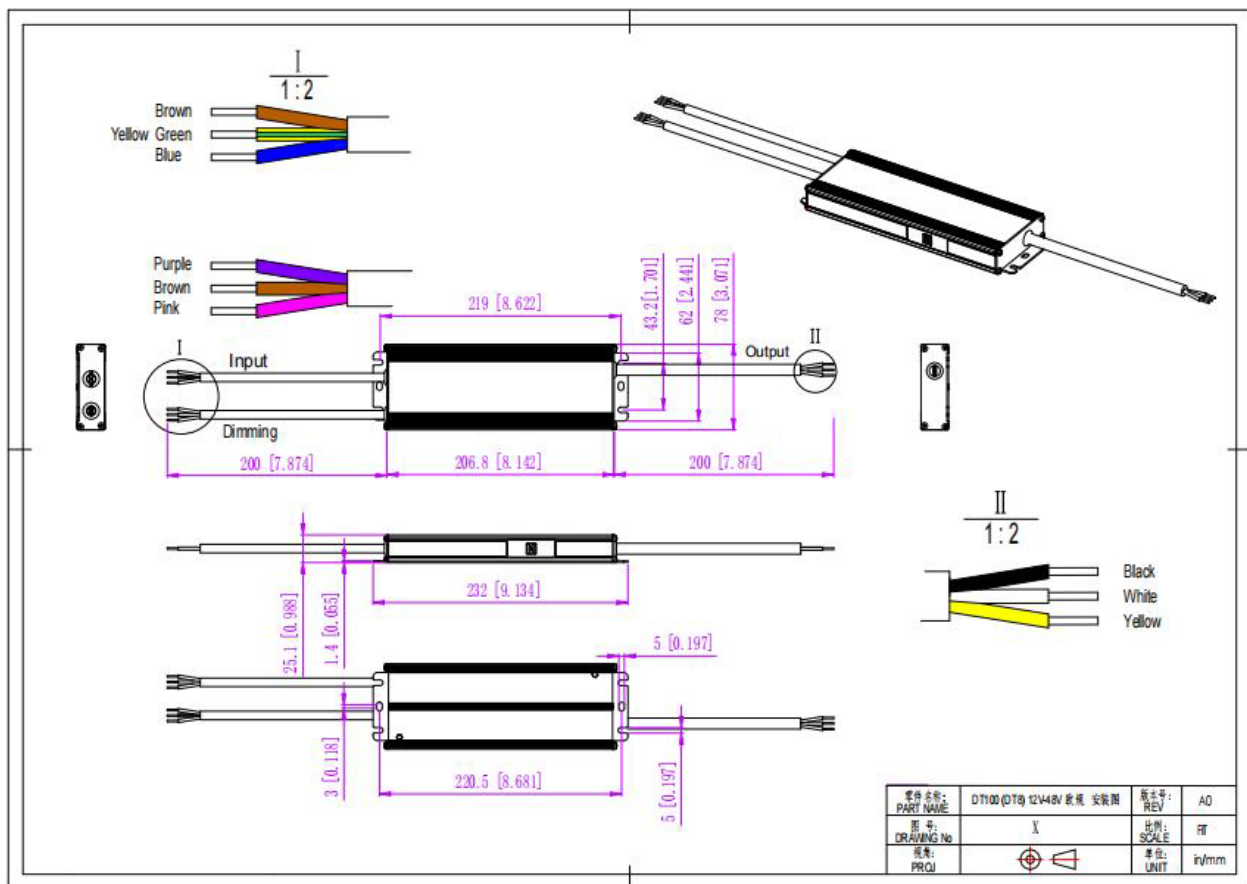
Safety & EMC

Safety standards	EN61347-1, EN61347-2-13, EN62493, IP66
Withstand voltage	I/P-O/P:3.75KVAC I/P-FG:1.88KVAC O/P-FG:0.5KVAC
Isolation resistance	I/P-O/P I/P-FG O/P-FG: 100MΩ/500VDC/25°C/70%RH
EMC Emission	Compliance to EN55015, EN61000-3-2, EN61000-3-3 (≥60% load)
EMC Immunity	Compliance to EN61000-4-2,3,4,5,6,11, EN61547

Other Specifications

Weight	0.83 Kg
Size	231x 78 x 25.1 mm
Packing	355 x 300 x 170 mm (20PCS/CTN, 18 Kg/CTN))

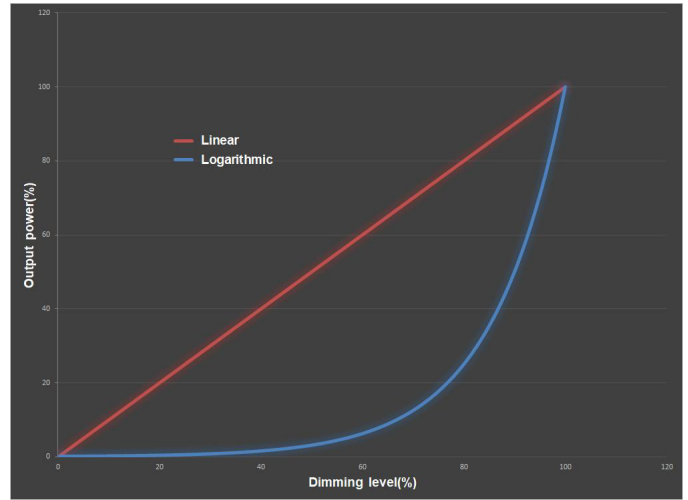
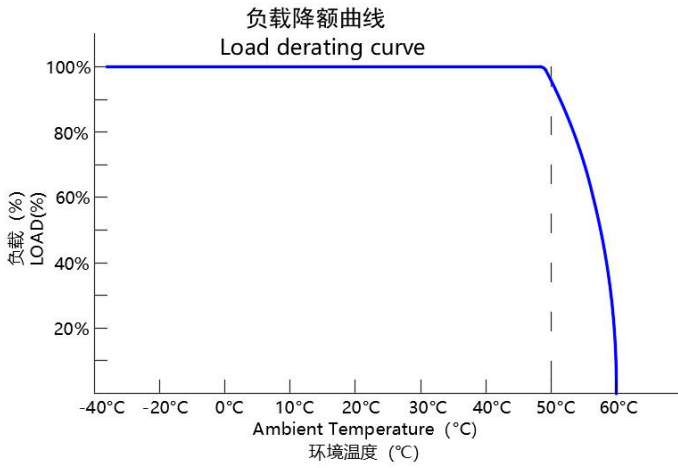
Mechanical Specifications



ELED-100-DP2 DT8 Series

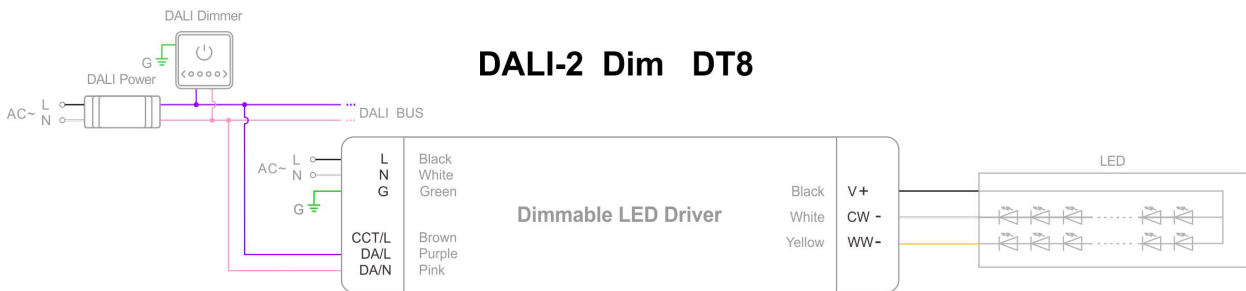
100W DALI 2 & Push Dimmable DT8 LED Driver

Derating Curve & whole brightness dimming Curve

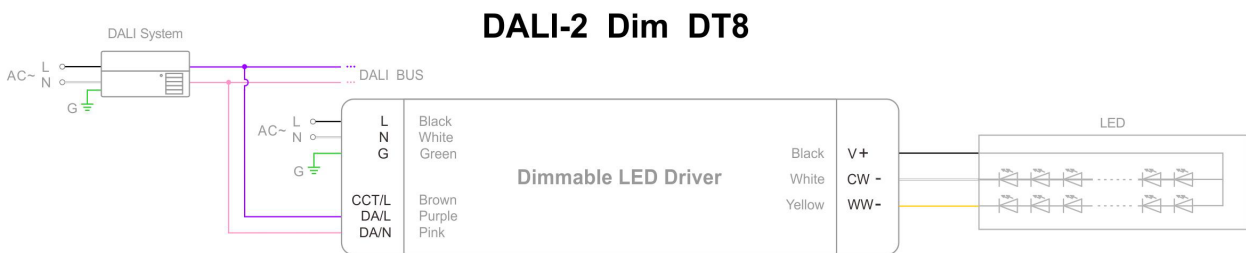


Dimming Operation

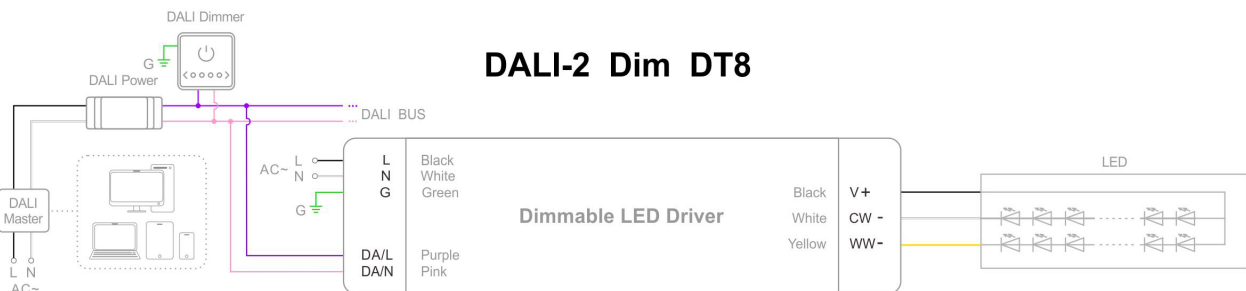
DALI-2 dimming with DALI power and dimmer



DALI-2 dimming with DALI system and DALI bus



DALI-2 dimming with intelligent device, DALI master and dimmer

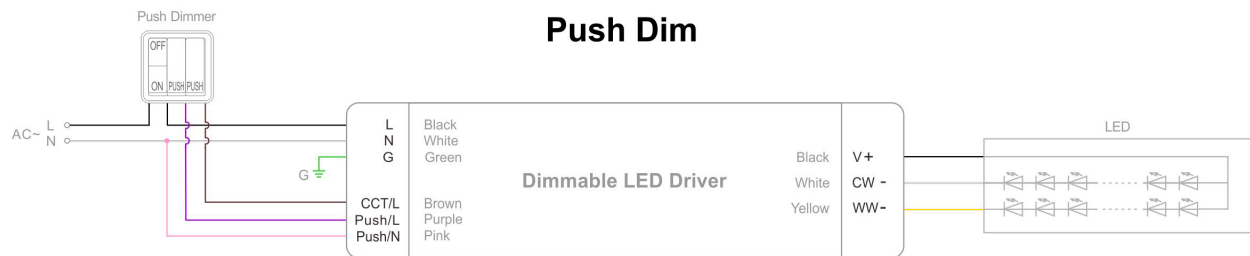
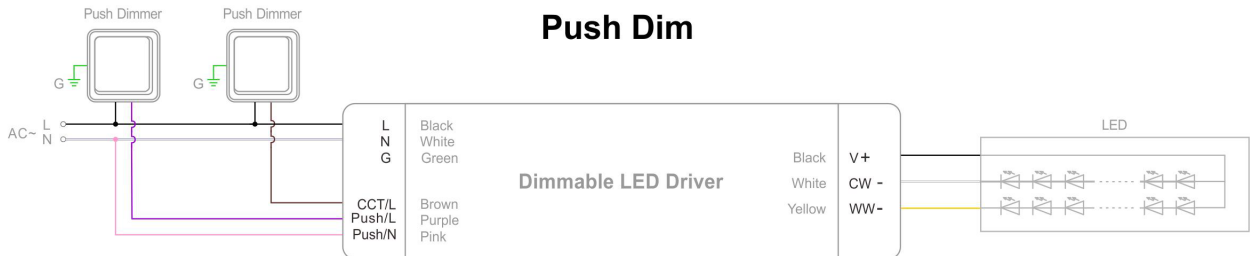


ELED-100-DP2 DT8 Series

100W DALI 2 & Push Dimmable DT8 LED Driver

Dimming Operation

DALI-2 dimming with intelligent device, DALI master and dimmer



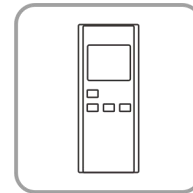
NFC Function



RDM



SetNFC APP



NFC Handheld devices

- Address settings:

① RDM setting address:

Set the address by the RDM device. For detailed operation, please refer to RDM device instruction manual.

② NFC setting address:

The address can be read and written by a mobile with Easy NFC APP or NFC handheld device (NFC read & write device: NFC-RW) by close to the NFC signal area of the driver.

Instruction

1. This driver should be installed by qualified and professional person.
2. Please make sure the driver is installed with adequate ventilation around it to allow for heat dissipation.
3. Ensure that wiring is correct before test in order to avoid light and power supply damage.
4. If driver Cannot work normally, don't maintain privately.