

# ELED-150-DP2 DT8 Series

150W DALI 2 & Push Dimmable LED Driver



NFC Handheld devices



EasyNFC app



EasyNFC app NFC handheld device

UK  
CA



SELV IP66



## Features:

- DT8- warm white and cool white dimming
- Constant voltage/ PWM Output (NFC regulation)
- DALI & Push dimming function (0-100%)
- AC input: 100-277VAC
- Built-in active PFC function
- Efficiency up to 93%
- Protections: Short circuit/ Over load/ Over temperature
- Cooling by free air convection
- IP66 design for indoor and outdoor installation.
- Suitable for intelligent LED lighting
- 5 year warranty

## Models

ELED-150-12DP2 DT8

ELED-150-24DP2 DT8

ELED-150-48DP2 DT8

## Output Specifications

|                   |                              |                            |                            |
|-------------------|------------------------------|----------------------------|----------------------------|
| Output Voltage    | 12V (12-13.5V adjust by NFC) | 24V (24-26V adjust by NFC) | 48V (46-50V adjust by NFC) |
| Voltage Tolerance | ± 0.5%                       |                            |                            |
| Output Current    | 12.5A                        | 6.25A                      | 3.13A                      |
| Rated Power       | 150W                         |                            |                            |
| Load Regulation   | ± 1-2%                       |                            |                            |

## Input Specifications

|                             |   |
|-----------------------------|---|
| Input Voltage               | 100-277VAC  |
| Frequency Range             | 47-63Hz   |
| Inrush Current              | 38.4A, 50%, 510us @120VAC; 88A, 50%, 120us @230VAC; 48A, 50%, 560us @277VAC |
| Full Load Efficiency (Typ.) | 92% 93.5% 93.5%   |
| AC Current (Max.)           | 1.7A  |
| Leakage Current             | <0.50mA   |
| Power Factor                | PF≥0.98@120VAC PF≥0.97@230VAC PF≥0.95@277VAC (Full loading)                 |

## Protection

|                  |  |
|------------------|--|
| Short Circuit    | Constant current mode, recovers automatically after fault condition is removed           |
| Over Loading     | ≤120% constant current limiting, recovers automatically after fault condition is removed |
| Over Temperature | 100°C± 10°C  |
| Protection Class | I  |

## Environment

|                     |                                     |
|---------------------|-------------------------------------|
| Working Temperature | -40~+60°C (Refer to derating curve) |
| Working Humidity    | 20-90% RH, non-condensing           |

# ELED-150-DP2 DT8 Series

150W DALI 2 & Push Dimmable LED Driver

## Safety & EMC

|                               |  |
|-------------------------------|--|
| Storage Temperature, Humidity | -40~+80°C, 10-95% RH   |
| Temperature Coefficient       | ±0.03%/°C (0-50°C)   |
| Vibration                     | 10-500Hz, 5G 10min./ 1 cycle, period for 60min.each along X, Y, Z axes |

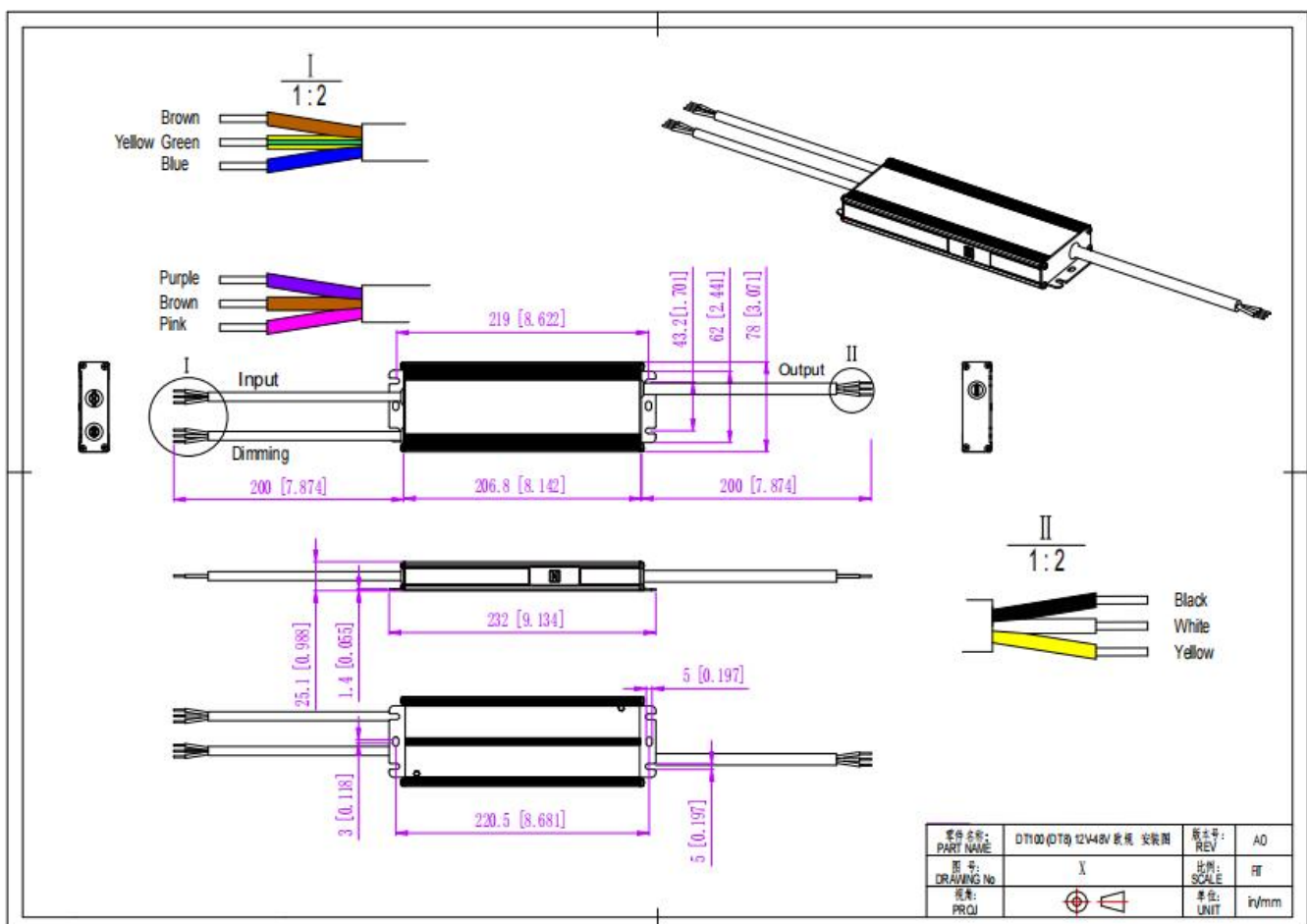
## Safety & EMC

|                      |   |
|----------------------|---|
| Safety standards     | EN61347-1, EN61347-2-13, EN62493, IP66                      |
| Withstand voltage    | I/P-O/P:3.75KVAC I/P-FG:1.88KVAC O/P-FG:0.5KVAC             |
| Isolation resistance | I/P-O/P I/P-FG O/P-FG: 100MΩ/500VDC/25°C/70%RH              |
| EMC Emission         | Compliance to EN55015, EN61000-3-2, EN61000-3-3 (≥60% load) |
| EMC Immunity         | Compliance to EN61000-4-2,3,4,5,6,11, EN61547               |

## Other Specifications

|         |  |
|---------|--|
| Weight  | 1.05 Kg                                    |
| Size    | 232x 78 x 25.1 mm                          |
| Packing | 330 x 300 x 210 mm (20PCS/CTN, 22 Kg/CTN)) |

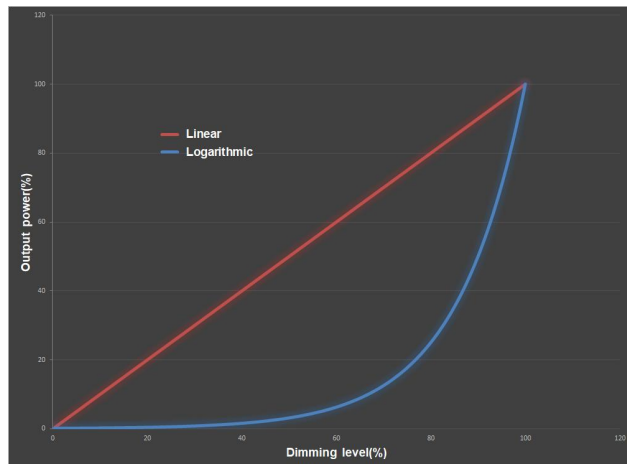
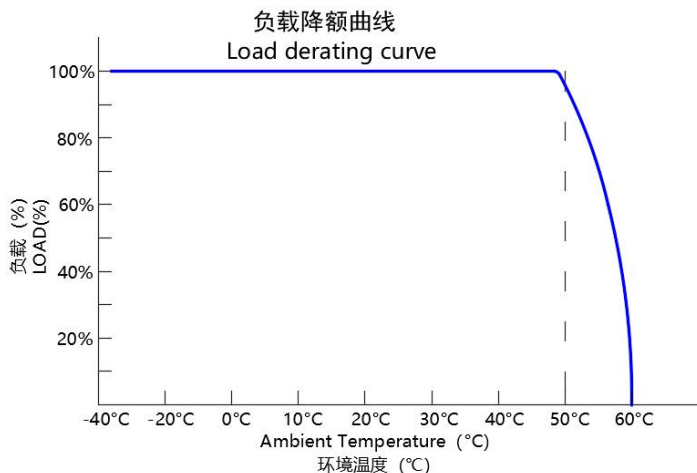
## Mechanical Specifications



# ELED-150-DP2 DT8 Series

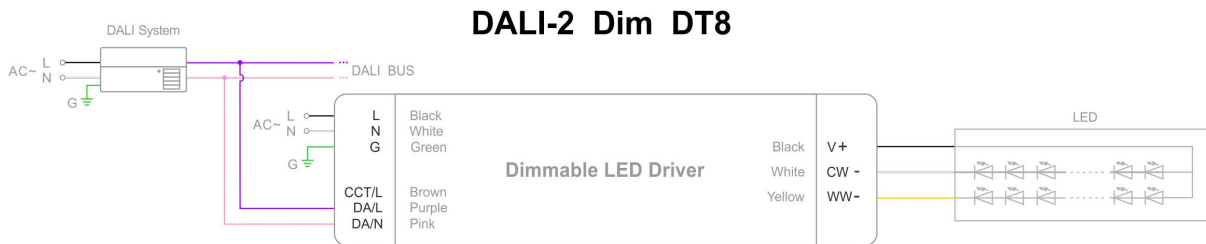
150W DALI 2 & Push Dimmable LED Driver

## Derating Curve & whole brightness dimming Curve

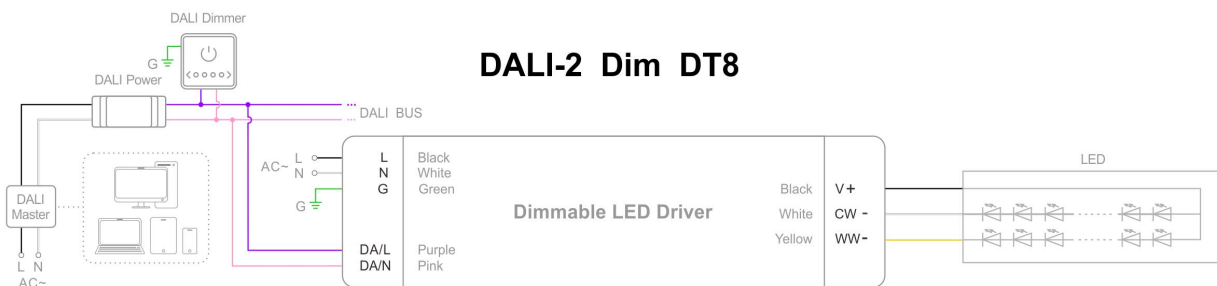


## Dimming Operation

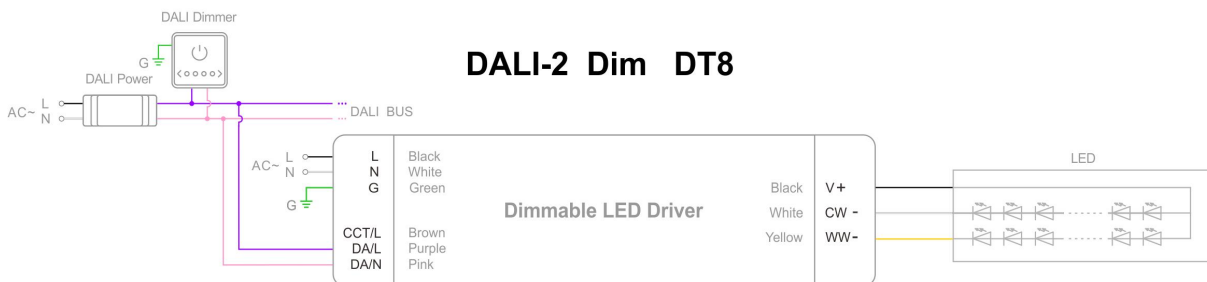
Using DALI-2 dimming with DALI power and dimmer



Using DALI-2 dimming with DALI system and DALI bus



Using DALI-2 dimming with intelligent device, DALI master and dimmer

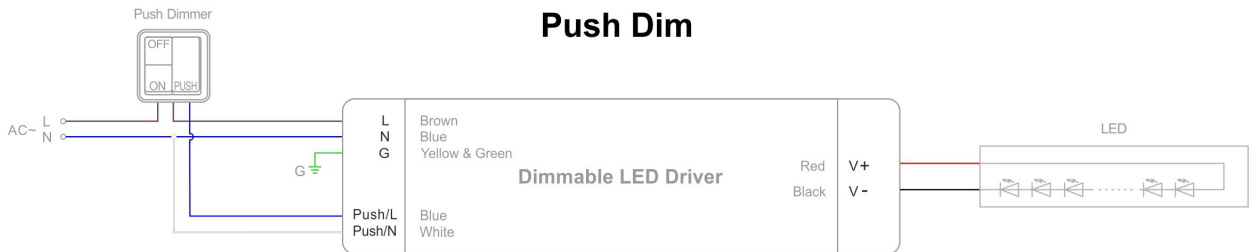
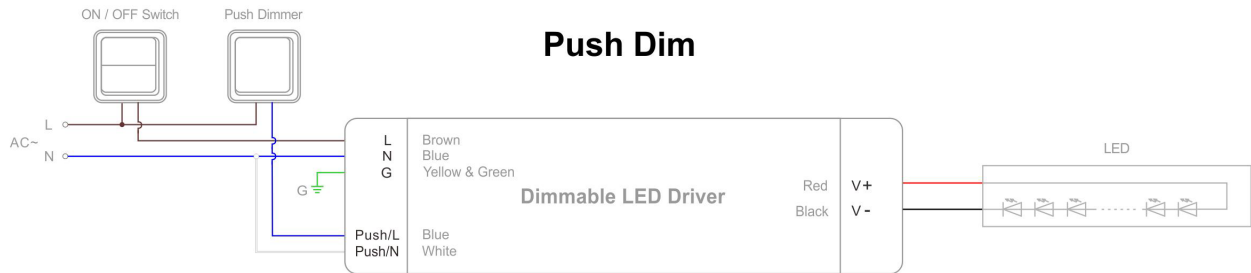


# ELED-150-DP2 DT8 Series

150W DALI 2 & Push Dimmable LED Driver

## Dimming Operation

PUSH dimming with dimmer (on & off function)



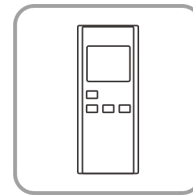
## NFC Function



RDM



SetNFC APP



NFC Handheld devices

- Address settings:

① RDM setting address:

Set the address by the RDM device. For detailed operation, please refer to RDM device instruction manual.

② NFC setting address:

The address can be read and written by a mobile with Easy NFC APP or NFC handheld device (NFC read & write device: NFC-RW) by close to the NFC signal area of the driver.

## Instruction

1. This driver should be installed by qualified and professional person.
2. Please make sure the driver is installed with adequate ventilation around it to allow for heat dissipation.
3. Ensure that wiring is correct before test in order to avoid light and power supply damage.
4. If driver Cannot work normally, don't maintain privately.