

ARCHITECTURAL FX

Technicians of Light

Neon 1515 Top Bend IP67



General Information

Flexible LED strip sealed in UV, chlorine, salt-water and solvent-resistant white PVC, for indoor and outdoor use
IP67

7.2w, 450 lumens per m

Single Colour White 2300, 2700, 3000, 4000 (Finished CCT)

CRI >90

Cutttable every 41.66mm

Width 15mm x Height 15mm (not including clip)

Bending radius: 300mm

Max Single length 5m, in-feeder connector and an end cap provided

Customized length with sealed connectors on request.

Constant light output and extended lifetime due to an integrated constant current source on the circuit board.

Electrical & output data

Input Voltage 24 Volt DC Constant Voltage (23 V min, 25 V max)

Temperature range: -20 to +45 °C

Ambient temperature: + 10 to +45 °C

Storage temperature Ts min = -30°C, Ts max = 85°C

Dimmable – Mains (Triac), 0-10v, Dali, DMX

Lifetime and Warranty (See full Architectural FX total system warranty for more detail)

Lifespan L70: 36,000 hours

Product availability lifetime – 3 years from last order

End of Lifetime guarantee 5 years

The above data are typical values. Due to tolerances in the production process and electrical components, values for light output and electrical power can vary up to 10%.

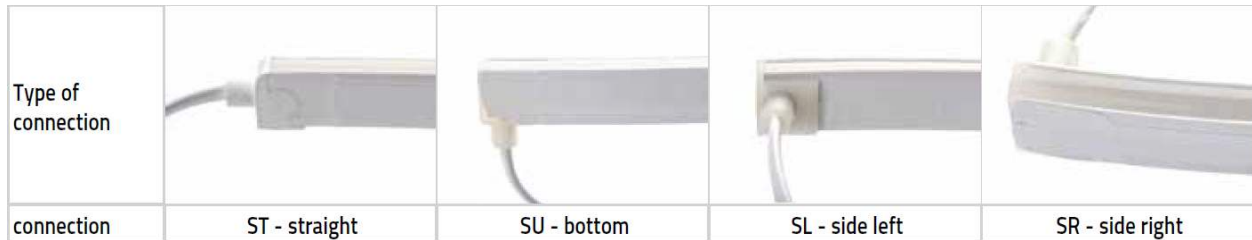


Generic Product	Product Type	Bend Orientation	Colour (Finished CCT)	w/m	Mounting Accessory	Cable Entry
Neon	1515	Top	2300k	7.2w	MC - 50mm Clip	End (Standard)
Neon	1515	Top	2700k	7.2w	MP – Mounting Profile	Side Left - SL
Neon	1515	Top	3000k	7.2w		Side Right – SR
Neon	1515	Top	4000k	7.2w		Rear - R
Neon	1515	Top	Red 620-630nm	7.2w		
Neon	1515	Top	Green 525-530nm	7.2w		
Neon	1515	Top	Blue 465-470nm	7.2w		

Example:

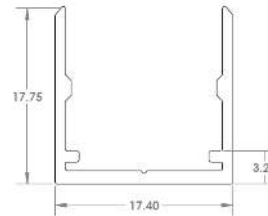
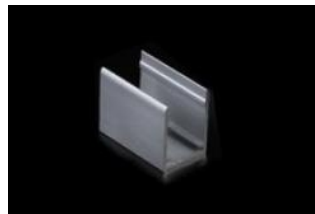
Neon 1515 Top 3000k 7.2w MC E (Custom length to suit project to be advised)

Customized length with sealed connectors on request.



Mounting and connecting accessories

Aluminum mounting profile 2000mm or mounting clip 50mm



Note: Do not twist or bend against bend orientation on install

