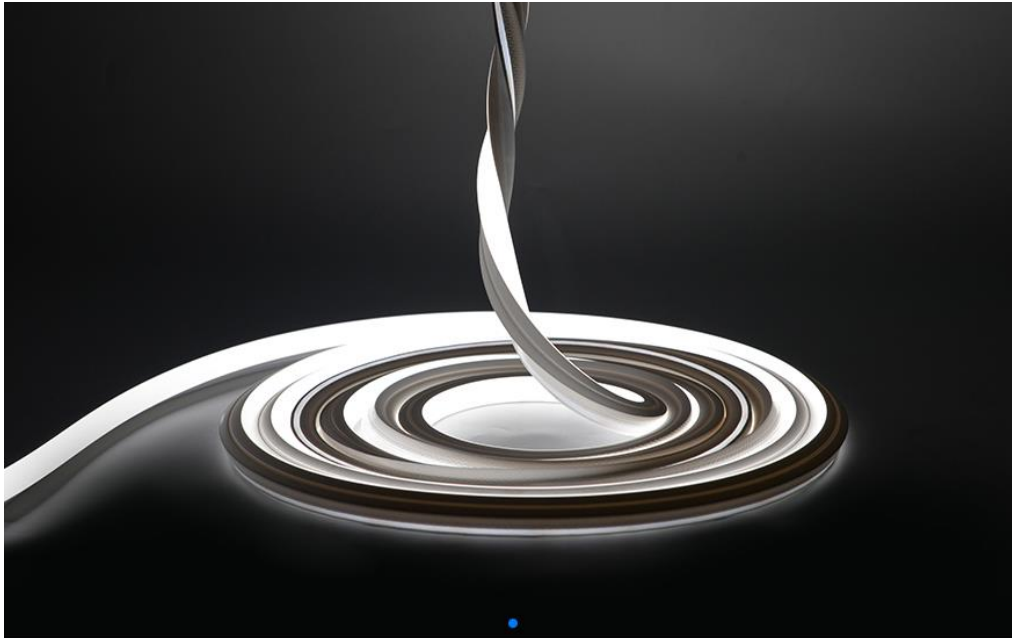


ARCHITECTURAL FX

Technicians of Light

Neon 3D 2020 Tunable White IP67



General Information

Flexible LED strip in UV, chlorine, saltwater, solvent and heat-resistant special silicone for indoor- and outdoor use
IP67 (Standard)

14w, 920 lumens per m (2700k @ 440lm/m, 6000k 480 lm/m)

Tunable White 2700 - 6000k (Finished CCT)

CRI >80 and CRI >90

Free Cutting

Width 20mm x Height 20mm

Bending diameter: Top Bend 200mm, Side Bend 280mm, Twist Max 360° per 1m

Max Single length 5m, in-feeder connector and an end cap as provided

Customized length with sealed connectors on request.

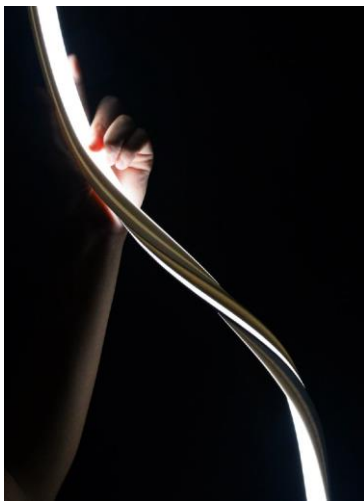
Constant light output and extended lifetime due to an integrated constant current source on the circuit board.

Electrical & output data

Input Voltage 24 Volt DC Constant Voltage (23 V min, 25 V max)
 Working Temperature range: -20 to +45°C
 Storage temperature Ts min = 0°C, Ts max = 60°C
 Dimmable – Mains (Triac), 0-10v, Dali, DMX
 Protected against electrostatic discharge +/- 2,000 V

Lifetime and Warranty (See full Architectural FX total system warranty for more detail)

Lifespan L70: 50,000hrs
 Product availability lifetime – 3 years from last order
 End of Lifetime guarantee 5 years
 The above data are typical values. Due to tolerances in the production process and electrical components, Values for light output and electrical power can vary up to 10%.



Minimum bending diameter 200mm/280mm
 Maximum Twist 360° per 1m
 (See Installation manual for more detail)

Generic Product	Product Type	Bend Orientation	Colour (Finished CCT)	w/m	Mounting Accessory	Cable Entry
Neon	3D TW 2020	All (Side, Top, Twist)	2700 - 6000k	14w	MP - Mounting Profile	End (Standard)
Neon	3D TW 2020	All (Side, Top, Twist)	Custom CCT on request	14w	MC - Mounting Clip	Side
					FMP - Flexible Mounting Profile	Top/Bottom

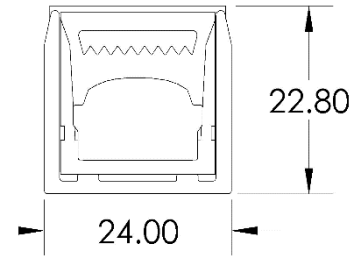
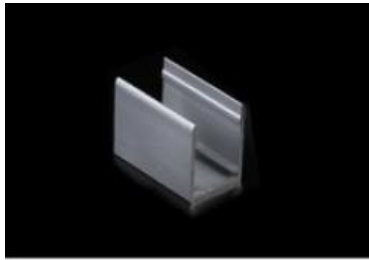
Example:

Neon 3D TW 2020 2700k 14w IP67 (Custom length to suit project to be advised)

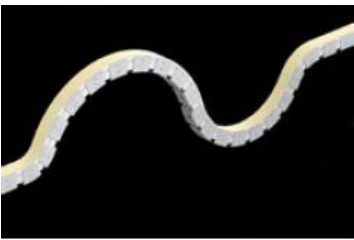


Mounting and connecting accessories

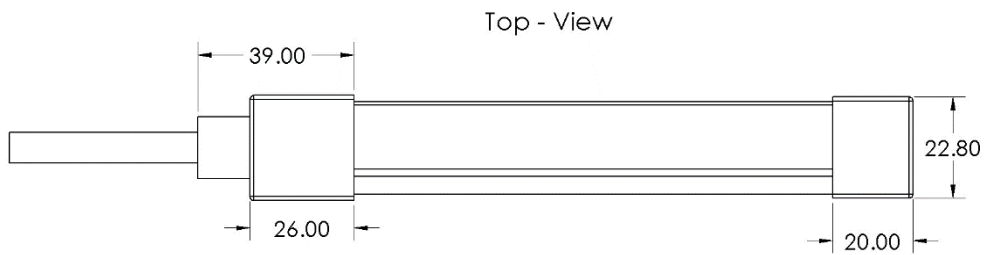
Aluminium mounting profile 2000mm or mounting clip 50mm



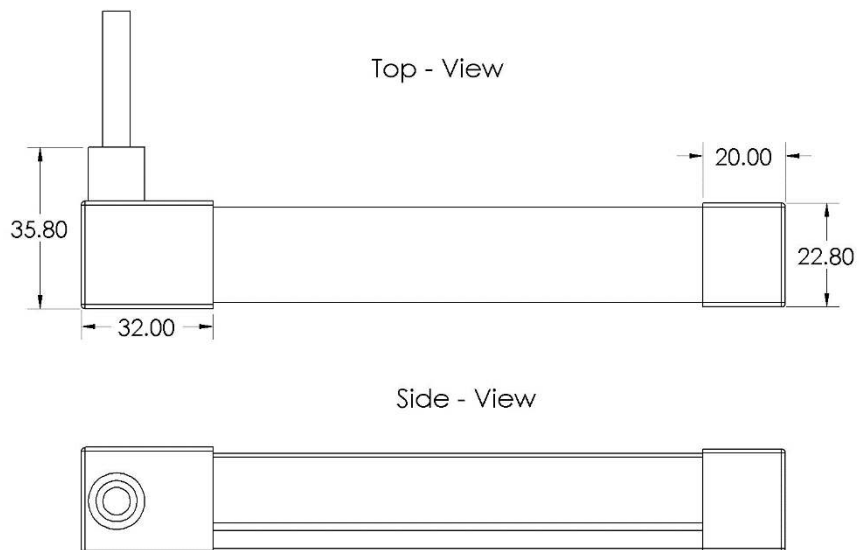
Flexible mounting profile Top or Side Bend or 3D 500mm

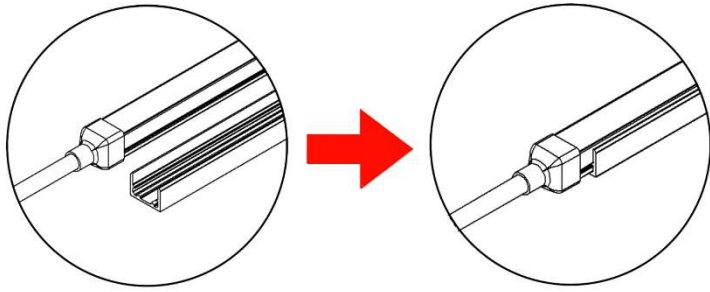


Side or top bend with straight end cap



Side or top bend with side end





Fixed by aluminium channel & screw

