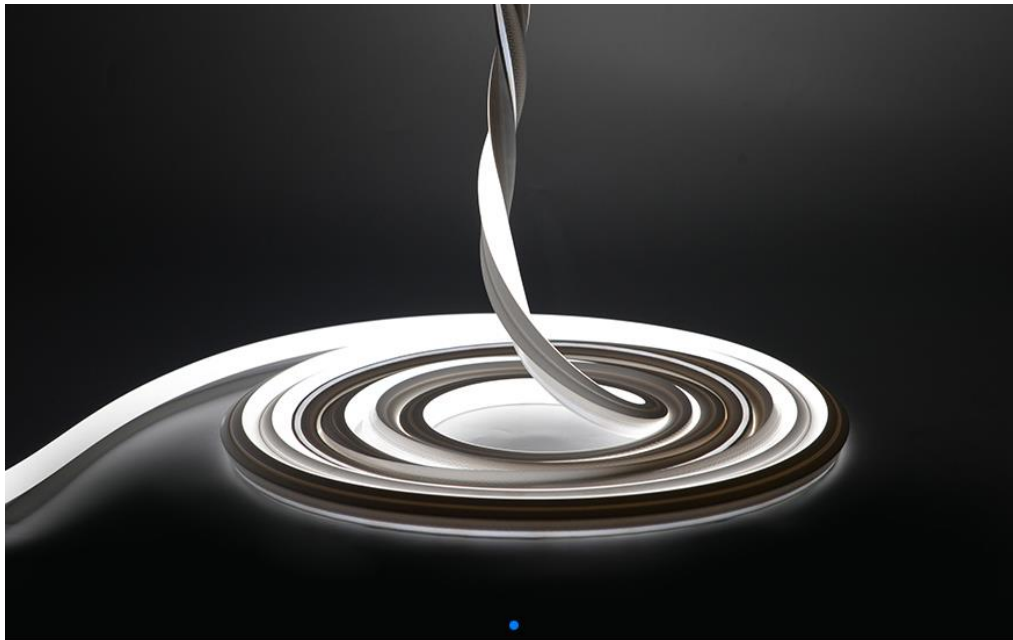


ARCHITECTURAL FX

Technicians of Light

Neon 3D Single Colour White IP67



General Information

Flexible LED strip in UV, chlorine, saltwater, solvent and heat-resistant special silicone for indoor- and outdoor use
IP67 (Standard)

7.2w, 450 lumens per m

Single Colour White 2200, 2700k, 3000k, 4000k (Finished CCT)

CRI >90

Cuttable every 41.66mm

LED spacing: 6.9mm

Width 15mm x Height 15mm

Bending diameter: 120mm

Max Single length 5m, in-feeder connector and an end cap as provided

Customized length with sealed connectors on request.

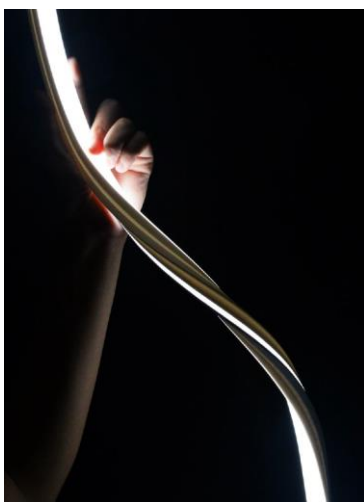
Constant light output and extended lifetime due to an integrated constant current source on the circuit board.

Electrical & output data

Input Voltage 24 Volt DC Constant Voltage (23 V min, 25 V max)
 Working Temperature range: -20 to +55°C
 Storage temperature Ts min = 0°C, Ts max = 60°C
 Dimmable – Mains (Triac), 0-10v, Dali, DMX
 Protected against electrostatic discharge +/- 2,000 V

Lifetime and Warranty (See full Architectural FX total system warranty for more detail)

Lifespan L70: 36,000 hours
 Product availability lifetime – 3 years from last order
 End of Lifetime guarantee 5 years
 The above data are typical values. Due to tolerances in the production process and electrical components, Values for light output and electrical power can vary up to 10%.



Maximum bending radius 60mm
 (See Installation manual for more detail)

Product Reference builder

Generic Product	Product Type	Bend Orientation	Colour (Finished CCT)	w/m	Mounting Accessory	Cable Entry
Neon	3D	All (Side, Top, Twist)	2200k	7.2w	MP - Mounting Profile	End (Standard)
Neon	3D	All (Side, Top, Twist)	2700k	7.2w	MC - Mounting Clip	Side
Neon	3D	All (Side, Top, Twist)	3000k	7.2w	FMP - Flexible Mounting Profile	Rear
Neon	3D	All (Side, Top, Twist)	4000k	7.2w		
Neon	3D	All (Side, Top, Twist)	Red, Green, Blue, Yellow	7.2w		

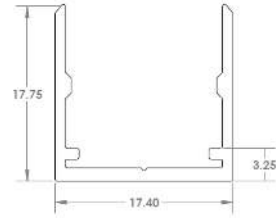
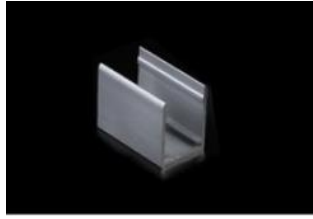
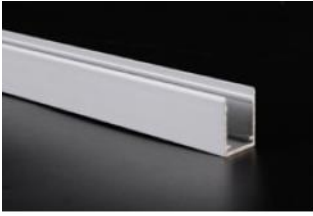
Example:

Neon 3D 2700k 7.2w IP67 (Custom length to suit project to be advised)

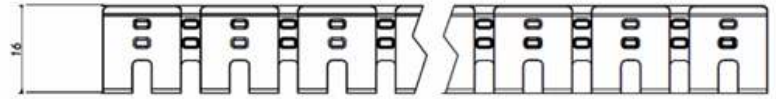
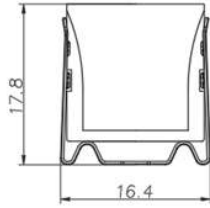


Mounting and connecting accessories

Aluminium mounting profile 2000mm or mounting clip 50mm

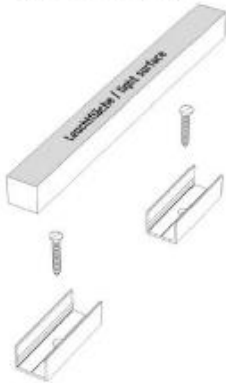


Flexible mounting profile Top or Side Bend or 3D 500mm



(Indicates product inside profile)

Clip mounting



Profile mounting



Plaster In mounting profile Top or Side Bend or 3D 1000mm

