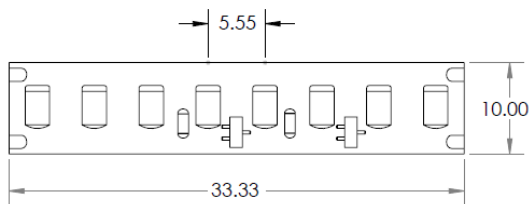
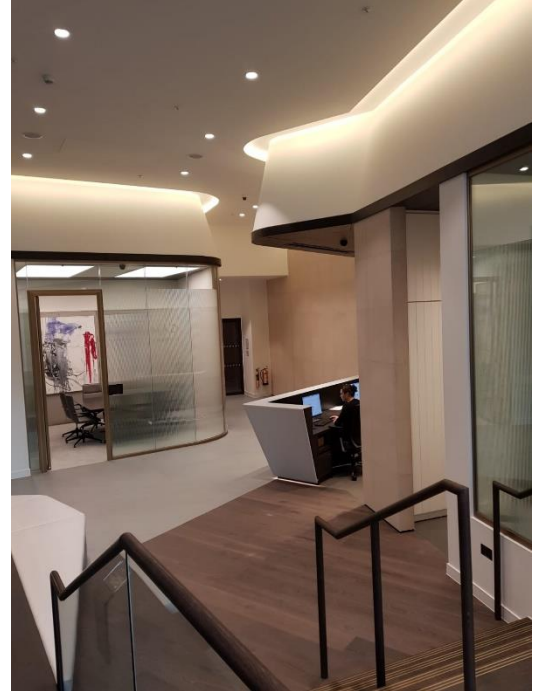


Integrate DTW (Dim to Warm)

General Information

- Flexible LED strip IP20
- 24v DC Constant Voltage
- Beam angle: 120°
- CRI >90+
- R9 >65
- Increments 33.33mm
- LED Pitch: 5.55mm
- Lifespan L70: ≥ 36,000 hours
- Dimmable – DALI, DMX, 0-10v
- Max Ambient operating temperature (10w/m, 14.4w/m 50°C, 20w/m 45°C)
- Integrate fixtures IP40, IP44
- 5 Year warranty



Integrate LED Code	CCT	10w/m lm/m	14.4w/m lm/m	20w/m lm/m
DTW	1900-3000k	650	1150	1300

Note: -40% light loss with Opal cover

About the Light source:

24v, flexible LED strip with reflective, white surface and 3M adhesive tape on the back. Homogeneous light source for fixtures with Opal covers <25mm from LED to Opal cover. Bridgelux LEDs of the highest quality. 120° beam angle.

“One Bin Only” within 2 MacAdam

Integrated Constant Current technology to guarantee Constant color and Intensity over from first to last LED over lifetime.

About the Fixtures:

A portfolio of Aluminium Recessed, Surface Mounted, Suspended or Plaster-In profiles, covers and mounting accessories for Interior, Exterior architectural and commercial applications.

(See separate pdf catalogue and specification builder for options)