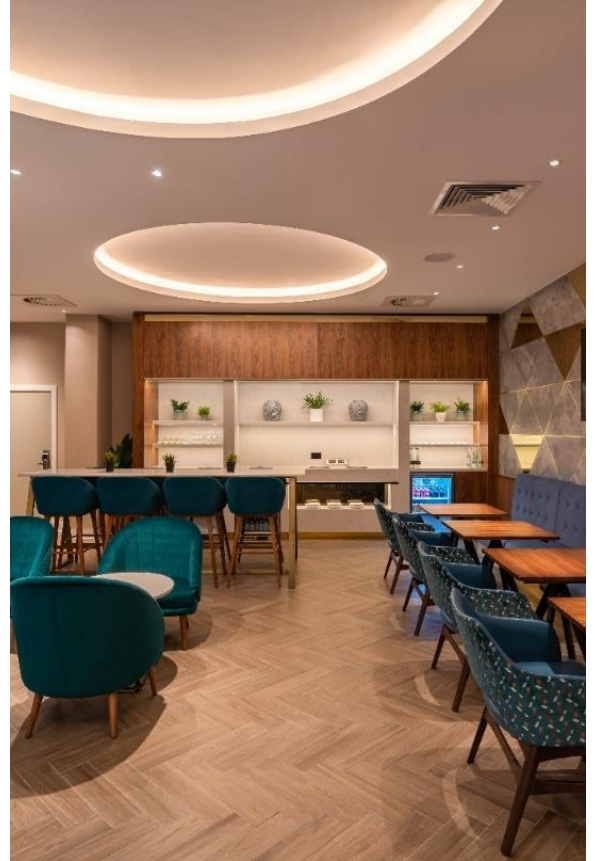
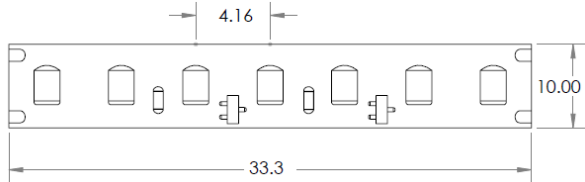


Integrate Pro 90 240 HE

General Information

- Flexible LED strip IP20
- 24v DC Constant Voltage
- Beam angle: 120°
- CRI >90
- R9 >50
- Increments 33.3mm
- LED pitch: 4.16mm
- Lifespan L80 B10 ≥ 50,000 hours
- Dimmable – Mains (Triac) DALI, DMX, 0-10v
- Max Ambient operating temperature (4.8w-14.4w/m 50°C, 19.2w-24w/m 45°C)
- Available IP40, IP44
- 5 Year warranty



Integrate LED Code	CCT	4.8w/m	5.9w/m	7.2w/m	9.6w/m	14.4w/m	19.4w/m	21.6w/m	24w/m
		lm/m	lm/m	lm/m	lm/m	lm/m	lm/m	lm/m	lm/m
Pro 90 240	2200k	755	928	1132	1509	2264	3050	3396	3774
Pro 90 240	2500k	799	982	1199	1598	2397	3230	3596	3996
Pro 90 240	2700k	843	1037	1265	1687	2530	3409	3796	4218
Pro 90 240	3000k	888	1091	1332	1776	3664	3600	3996	4440
Pro 90 240	4000k	977	1200	1465	1953	2930	3947	4395	4884
Pro 90 240	5000k	1021	1255	1531	2042	3063	4127	4595	5106

Note: -40% light loss with Opal cover

About the Light source:

24v, flexible LED strip with reflective, white surface and 3M adhesive tape on the back. Homogeneous light source for fixtures with Opal covers <15mm from LED to Opal cover. Nichia LEDs of the highest quality. 120° beam angle.

“One Bin Only” within 3 MacAdam

Integrated Constant Current technology to guarantee Constant color and Intensity over from first to last LED over lifetime

About the Fixtures:

A portfolio of Aluminium Recessed, Surface Mounted, Suspended or Plaster-In profiles, covers and mounting accessories for Interior, Exterior architectural and commercial applications.

(See separate pdf catalogue and specification builder for options)