

ARCHITECTURAL FX

Technicians of Light

Neon 3D 1616 Honeycomb IP67



General Information

Flexible LED strip in UV, chlorine, saltwater, solvent and heat-resistant special silicone for indoor and outdoor use
IP67 (Standard)

White/Black or Black/Black

IK06

2700k, 3000k, 3500k, 4000k (Finished CCT)

14w/m

Free Cutting 150 lumens per m

50mm increments 300 lumens per m

CRI >80/90

Width 16mm x Height 16mm

Bending diameter: Top Bend 200mm, Side Bend 280mm, Twist Max 360° per 1m

Max Single length 5m, in-feeder connector and an end cap as provided

Customized length with sealed connectors on request.

Constant light output and extended lifetime due to an integrated constant current source on the circuit board.

Electrical & output data

Input Voltage 24 Volt DC Constant Voltage (23 V min, 25 V max)

Working Temperature range: -20 to +55°C

Storage temperature Ts min = 0°C, Ts max = 60°C

Dimmable – Mains (Triac), 0-10v, Dali, DMX

Protected against electrostatic discharge +/- 2,000 V

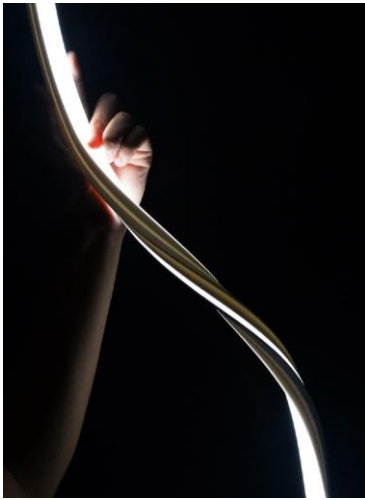
Lifetime and Warranty (See full Architectural FX total system warranty for more detail)

Lifespan L70 50,000 hours Outdoor 50,000hrs Indoor

Product availability lifetime – 3 years from last order

End of Lifetime guarantee 5 years

The above data are typical values. Due to tolerances in the production process and electrical components, Values for light output and electrical power can vary up to 10%.



Maximum bending diameter 300mm
 Maximum Twist 360°
 (See Installation manual for more detail)

| Generic Product | Product Type | Bend Orientation | Colour (Finished CCT) | w/m | Mounting Accessory | Cable Entry |
|-----------------|--------------|------------------------|-----------------------|-----|---------------------------------|----------------|
| Neon | 3D 1616 | All (Side, Top, Twist) | 2700k | 14w | MP - Mounting Profile | End (Standard) |
| Neon | 3D 1616 | All (Side, Top, Twist) | 3000k | 14w | MC - Mounting Clip | Side |
| Neon | 3D 1616 | All (Side, Top, Twist) | 3500k | 14w | FMP - Flexible Mounting Profile | Top/Bottom |
| Neon | 3D 1616 | All (Side, Top, Twist) | 4000k | 14w | | |

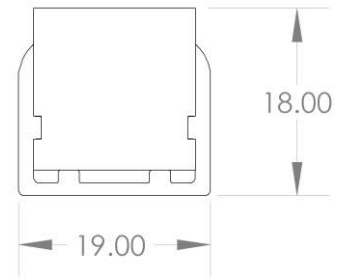
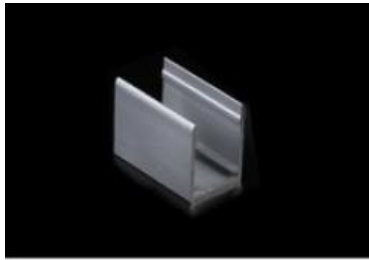
Example:

Neon 3D 1616 Honeycomb 2700k 14w IP67 (Custom length to suit project to be advised)

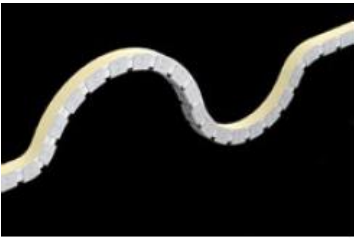


Mounting and connecting accessories

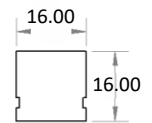
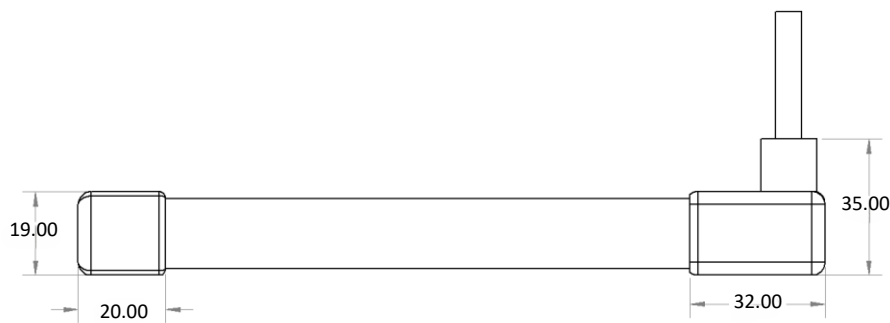
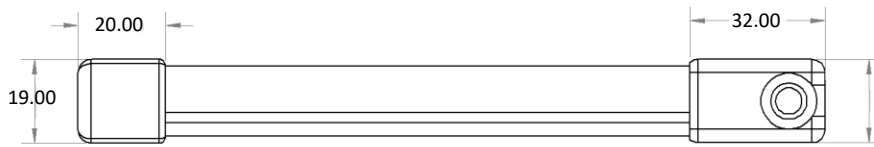
Aluminium mounting profile 2000mm or mounting clip 50mm



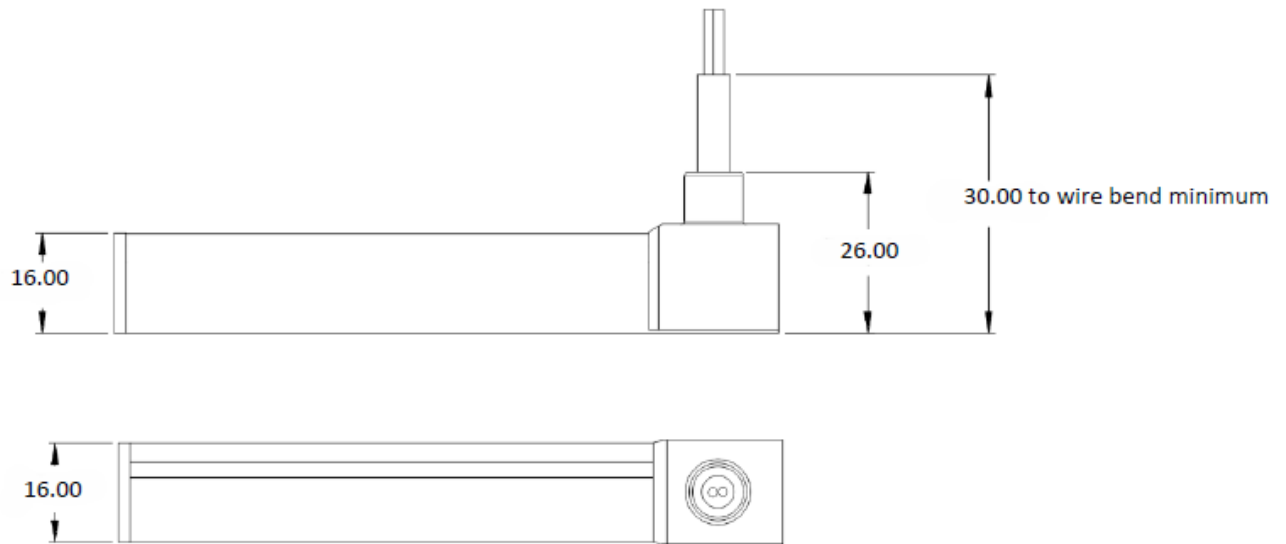
Flexible mounting profile Top or Side Bend or 3D 500mm



Side Left, Side Right or Rear cable entry IP67 (Cut and re-connect)



Side Left, Side Right or Rear cable entry IP67 (Factory moulded)



End cable entry IP67 (Factory moulded)

