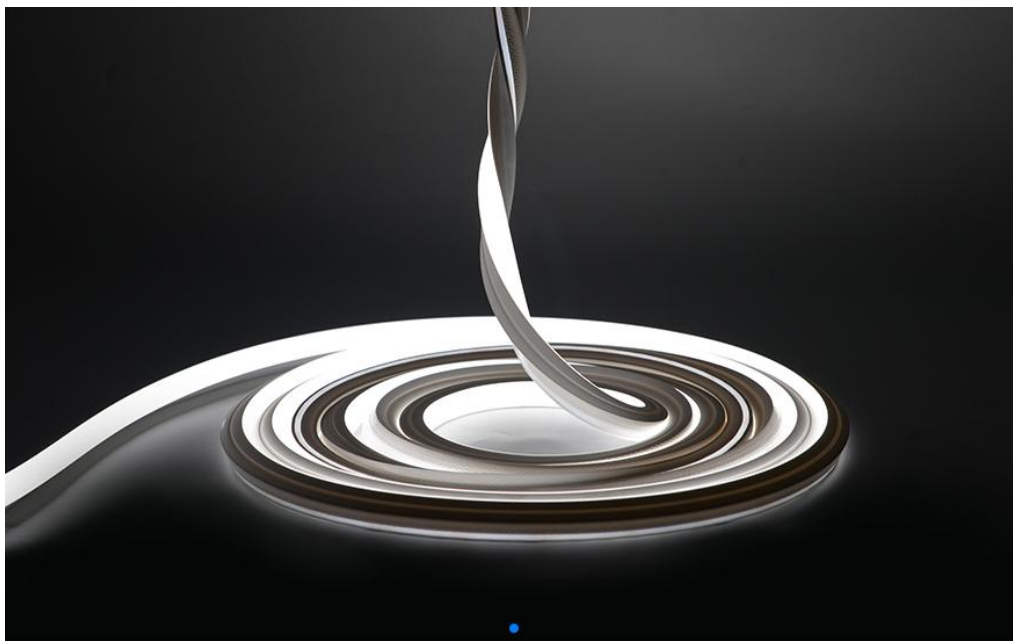


ARCHITECTURAL FX

Technicians of Light

Neon 3D 3425 Honeycomb Optiq White IP67



General Information

Flexible LED strip in UV, chlorine, saltwater, solvent and heat-resistant special silicone for indoor- and outdoor use
IP67 & IK07 (Standard)

Dark Grey or White Housing

2700k, 3000k, 3500k, 4000k, 5000k (Finished CCT)

25w, Up to 1250 lumens per m @ 4000k White housing

CRI >80 or CRI >90

Cutting increments 250mm

Width 34mm x Height 25mm

Bending diameter: 300mm

Twist 360° per 1000mm

Max Single length 5m, 10m (Cable both ends) Lengths >5m must be wired from both ends

Customized length with sealed connectors on request.

Constant light output and extended lifetime due to an integrated constant current source on the circuit board.

Electrical & output data

Input Voltage 24 Volt DC Constant Voltage (23 V min, 25 V max)

Working Temperature range: -20 to +45°C

Storage temperature Ts min = 0°C, Ts max = 60°C

Dimmable – Mains (Triac), 0-10v, Dali, DMX

Protected against electrostatic discharge +/- 2,000 V

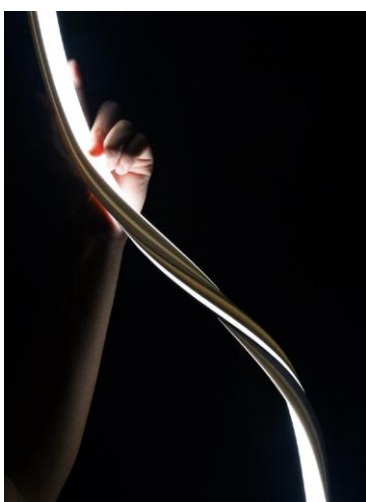
Lifetime and Warranty (See full Architectural FX total system warranty for more detail)

Lifespan L70 50,000hrs

Product availability lifetime – 3 years from last order

End of Lifetime guarantee 5 years

The above data are typical values. Due to tolerances in the production process and electrical components, Values for light output and electrical power can vary up to 10%.



**Maximum bending diameter 300mm
Maximum Twist 360°
(See Installation manual for more detail)**

CRI >80 White Housing

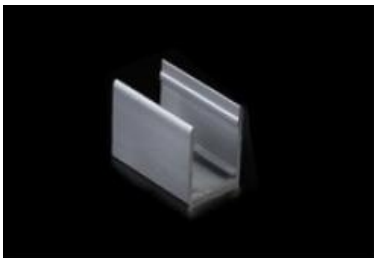
Generic Product	Product Type	Bend Orientation	Colour (Finished CCT)	Output/Lumen per m	w/m	Beam Angle
Neon	3D 3425 Honeycomb Optiq	All (Side, Top, Twist)	2700k	1125	25	10°
Neon	3D 3425 Honeycomb Optiq	All (Side, Top, Twist)	3000k	1187	25	15°
Neon	3D 3425 Honeycomb Optiq	All (Side, Top, Twist)	3500k	1187	25	20°
Neon	3D 3425 Honeycomb Optiq	All (Side, Top, Twist)	4000k	1250	25	25°
Neon	3D 3425 Honeycomb Optiq	All (Side, Top, Twist)	5000k	1250	25	30°
Note: Lumen output for 20° beam angle – Other angles vary eg 10° = -20%						25° x 40°

CRI >90 White Housing

Generic Product	Product Type	Bend Orientation	Colour (Finished CCT)	Output/Lumen	w/m	Beam Angle
Neon	3D 3425 Honeycomb Optiq	All (Side, Top, Twist)	2700k	954	25	10°
Neon	3D 3425 Honeycomb Optiq	All (Side, Top, Twist)	3000k	1007	25	15°
Neon	3D 3425 Honeycomb Optiq	All (Side, Top, Twist)	3500k	1007	25	20°
Neon	3D 3425 Honeycomb Optiq	All (Side, Top, Twist)	4000k	1060	25	25°
Neon	3D 3425 Honeycomb Optiq	All (Side, Top, Twist)	5000k	1060	25	30°
Note: Lumen output for 20° beam angle – Other angles vary eg 10° = -20%						25° x 40°

Mounting and connecting accessories

Aluminium mounting profile 2000mm or mounting clip 50mm

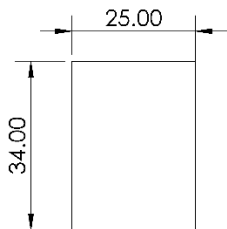


Flexible mounting profile Top or Side Bend or 3D 500mm

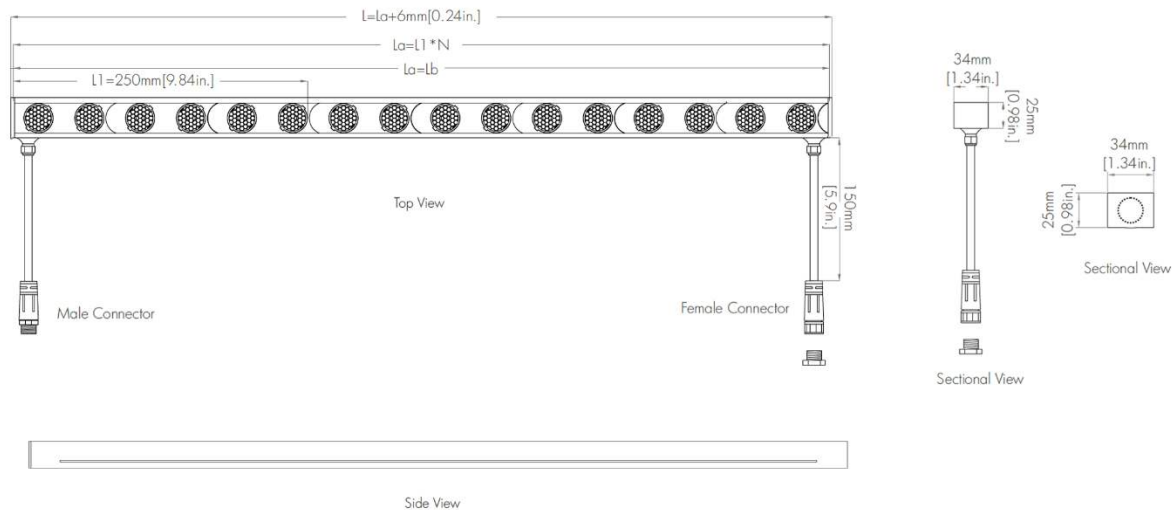


Mounting Accessory	Cable Entry
MP - Mounting Profile	End (Standard)
MC - Mounting Clip	Side
FMP - Flexible Mounting Profile	Top/Bottom

Product code Example:
Neon 3D 2323 Optiq (? Beam angle) 2700k 18w IP67 (Custom length to suit project to be advised)



Power entry on the side (male plug at the input side and female plug at the output side as standard configuration)



Power entry on the bottom (male plug at the input side and female plug at the output side as standard configuration)

